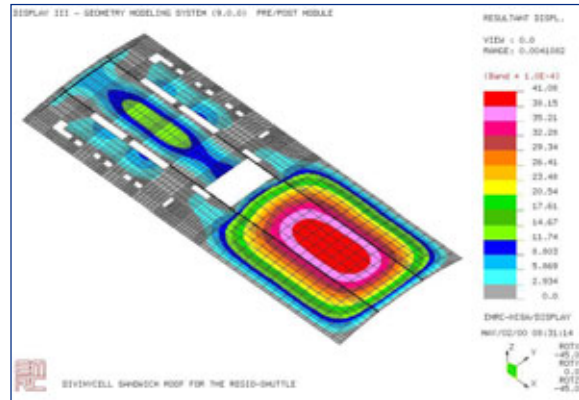


PRODUCTS IN ACTION

Adtranz Regio-shuttle



The Regio-Shuttle



The Regio-Shuttle manufactured by Adtranz is an innovative solution for regional transport. It is an intelligent solution where the low-floor concept in combination with the sandwich design of covering panels creates a spacious and comfortable interior. The front, sides and roof of the train is all made in a sandwich construction with DIAB core materials that provide integrated functions like thermal and acoustical insulation as well as an excellent surface finish. The front is made with a Divinycell H80 core material to live up to the very tough impact requirements. The roof is on the other hand made in Klegecell SR 65 to be able to cope with up to 90 °C surface temperature.

Core material:

Length:	25.5 m
Width:	2.9 m
Height:	3.7 m
Passengers:	up to 334
Speed:	120 km/h

Divinycell® H-grade and Klegecell® SR-grade, delivered in kits

Face material (front section):	Glass fibre / Fibre retarded polyester
Manufacturing process:	VARIM (Vacuum Assisted Resin infusion Moulding)
Manufacturer:	LM Glasfiber A/S

Face material (covering panels):	Glass fibre / Fibre retarded polyester
Manufacturing process:	VARTM (Vacuum Assisted Resin Transfer Moulding)
Manufacturer:	Jupiter Plast A/S

Structural Design:	DIAB Technical Services
--------------------	-------------------------

